

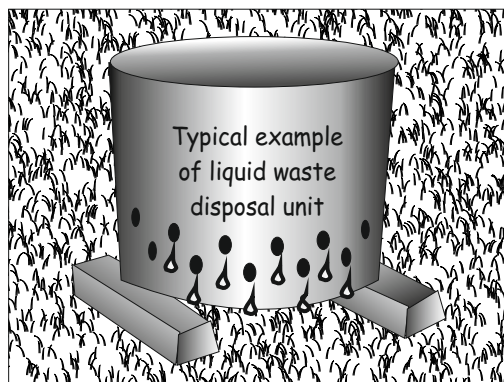
Site Rules Cont'd

Identification

All campers are required to have some form of identification when on site. Please ensure that a Group; tee shirt, badge, hat, ID card or scarf etc. Is worn at all times. **This includes all adults as well as young people please.**

Waste disposal

Please do not dig any kind of pit for waste disposal. Solids that cannot be burnt should be placed in the large bins by the toilets. Liquid waste should be strained through a perforated container that is filled with grass and suspended above the ground. Cold and dampened fire ashes should be scattered in the bushes around the edge of site areas.



Noise

Please observe a curfew from 11pm to 7.30am and ensure that any music is only ever played and heard on your site. Thanks.

Privacy

It is only common courtesy to ensure that no campers ever pass uninvited through other occupied sites.

Woodland Care

These notes are for the attention of all campers and visitors to Thriftwood. The woodland is subject to a Tree Preservation Order, this means that all the trees, young and old may not be felled, lopped, or damaged in any way. The current max. fine for contravening the order is £20,000 per tree. So please ensure that all those in your charge keep axes on site, do not cut anything without the permission of Site staff.



Activities Fees

Item or Facility	Max. Number of items	Max. people per session	Equipment, plus facility charge	Instructors per hour
Climb & Abseil	2 Faces	10	£27.00 per hour	£17.60
Climb or Abseil	2 Faces	15	£27.00 per hour	£17.60
Ice Climbing	1 Face	14	£35.00 per hour	£17.60
Archery	1 Range	18	£25.00 per hour	£17.60
.177 Rifles	1Range	12	£25.00 per hour	£17.60
Kayaks	24 Kayaks	12	£3.00 per canoe/hour	£17.60
Circus Skills	1 Set	20	£13.50 per hour	£17.60
Team Building	6 Games	24	£13.50 per set / hour	£17.60
Sky High Walk	1 Beam	14	£45.00 per hour	Includes Instructor
Crate Stack	1 Area	14	£45.00 per hour	Includes Instructor
Jacob's Lader	1 Ladder	14	£45.00 per hour	Includes Instructor
Tree Climbing	1Tree	12	£45.00 per hour	Includes Instructor
Water Roller	1 Tube	20	£45.00 per hour	Includes Instructor
Canoe River Trip	6 Boats	12	£153.00 per session	Includes Instructor
Laser Tag	12 Guns	12	£43.00 per hour	
Bouldering Wall	1 Wall	20	£32.00 per hour	
Pedal Cars	1 Track	20	£33.00 per hour	
Cresta Run	1Track	24	£29.50 per hour	
Canadian C2	3 Canoes	9	£5.80 per canoe / hour	
Cork Guns	1 Area	12	£12.50 per hour	
Crossbows	1 Set	20	£13.50 per hour	
Orienteering	24 Copies	48	60p per copy	
Woody Walk	18 Copies	36	£1.00 per booklet	
Volley Ball	2 Nets	24	£3.00 per session	
Photo Quiz	10 Sets	30	£1.00 per set	
Fishing poles	10 Poles	10	£3.80 per rod / session	
Rafting	10 Rafts	40	£9.50 per raft / session	
Pioneering	2 Projects	36	£9.50 per project / session	
Kave Maze	1 Area	20	£19.00 per hour	
Pond Dipping	2 Sets	24	£6.00 per set / session	
Trampolines	2 Trampolines	20	£17.00 per hour	
Earth Ball	1 Ball	24	£22.00 per hour	
Demolition Derby	1Inflatable	24	£43.00 per hour	
Inflata-Bull	1 Inflatable	20	£28.00 per hour	
Adventure Playground		36	£20.00 per hour	

Hire of facility only ie wall, rifle range, archery field, canoeing lake - £12 per hour.

Camping Equipment Hire

Party Tent per day, 6M x 4 M	= £31.00
Marquee erect	= £20.00
Dining Shelter	= £5.00
Tables each per day	= £1.00
Benches each per day	= 50p
Four man Hike tent per day (erected)	= £7.50

Access to camping

There is vehicular access to all camp sites and you may leave vehicles in your own site driveway, but please do not park along the sides of the tracks as this could cause obstructions for emergency vehicles. All other vehicles to car parks please. **Under no circumstances** will we permit vehicles to be driven onto any of the grassed camping areas, however many sites have gates which may be opened by site staff to allow you to push caravans and trailers on and off (See Sites marked **G** on map). Check this facility is available if required. Report to the Site Office on your arrival, and allow time before departure for us to inspect the site.

Toilets

Two new toilet and shower blocks have been constructed. Each block has 14 individual shower cubicles with changing facilities. There is hot water to all hand basins. Free hot showers. See web site www.thriftwood.org.uk for details and building progress.

Campfires

At weekends from May to September a fun sing song is held in the campfire circle to which all are welcome. During the summer holidays, campfire is on Thursday evenings.



Tuckshop

Souvenirs, sweets, drinks, gifts, cuddly toys and badges etc. are on sale in the 'Tuck Shop'. Opens daily at the times displayed (April to October), or at other times by arrangement.

How to find Thriftwood by road

With the aid of the local area map, in the centre of the brochure, we may be found along the A128 between Brentwood and Herongate. For those coming from the M25 take the exit at Junction 28 along the A1023 towards Brentwood. Pass through four sets of traffic lights and at the end of the High Street there is a double mini-round about, turn right along the A128 towards Ingrave. Go straight over the next set of lights, down the hill and over a railway bridge, immediately over the bridge turn left into Orchard Avenue, keep bearing left and after 150 yards you will find the entrance to Thriftwood, on the left between a small parade of shops and the beginning of Beech Avenue.

Staff

The Site employs staff to provide authorised activity instruction throughout the school holidays and the summer term. During other term-time weekends we rely on the work of our dedicated volunteer Service Crew.

Colin Tilbrook is the Centre Manager, he has been involved in Scouting since Cubs. He was appointed Centre Manger on the 1st Feb 2009, but has been at Thriftwood for over 7 years, he has many hobbies including Archery and Kayaking.



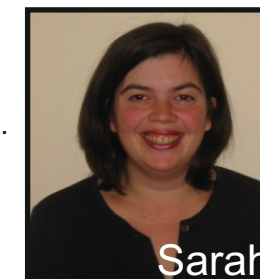
Stuart Patten (Stu) is our Deputy Manager, he has been in Scouting from a Beaver and is now a Scout Leader at his local group. He started here as a volunteer service crew member and has now been with us for over 11 years.

Alex Kerr is our Assistant Manager. He is involved with an Explorer Unit in Chelmsford and is a keen paddler. Alex has years of experience working at outdoor centres in France and brings this knowledge to Thriftwood.



Vikki Frost is our Assistant Manager and has been with the site as part of our loyal service crew for over 10 years. A competent skills instructor, Vikki is equally at home on the range, wall or office.

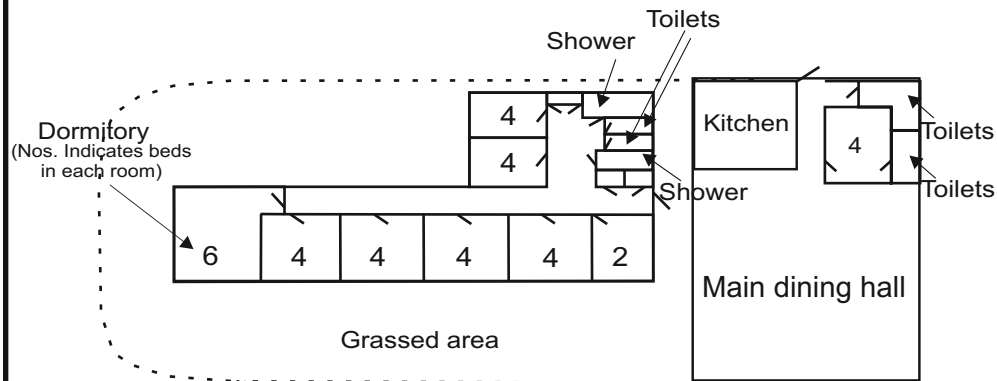
Sarah Tilbrook is the Shop Manager, she has been involved in Scouting since she was a Venture Scout. She has been a Scout leader and a Group Scout Leader, but has been on a break raising a family.



Oak Lodge

Pack Holiday Centre

The Oak Lodge complex has 9 rooms sleeping a total of 36, is fully centrally heated and carpeted, with a large dining hall, kitchen, and toilets. The main building is double glazed and linked to the dormitory. The kitchen is equipped with a six burner double oven, fridge, freezer, microwave, double sink drainer, all necessary cooking utensils, stainless steel preparation area, storage cupboards, shelves and work tops. Personal plates and cutlery provided. The main hall has 10 large folding tables, chairs for 36. The grassed area to the rear is for your exclusive use to play games or erect tents.



On Site Activities

Rifle shooting



The rifle range is a covered area with four firing positions and has additional seating for eight. Scout instructors require NSRA qualifications. Personal guns must be lodged in the Sites office, when not in use. Gun hire includes 100 pellets per gun and 2 targets per person.

Crate Stack

2 Climbers must use their balance, to create the highest stack, as the crates get higher, the more your balance will be tested. A team building activity that involves the participants helping each other to build and stand on a stack of crates



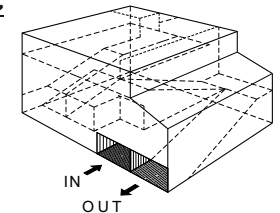
Archery



The archery field and/or equipment may be hired. Having a max. of six archers shooting and seating for a further twelve. Instructors must be to GNAS standard. Lost arrows charge - £4:00.

3D Kave Maze

This feature has four levels of tunnels that wind their way up and down until you find your way to the top and then down and out? Crawl around in darkness, or with lights. Lots of fun and thrills. Suitable for all ages and sizes.



Sky Hi Walk



This section of a high ropes course comprises of a 14 meters long beam that is suspended 6 metres from the ground. One or two participants then climb the cargo net to a platform from which they then walk along the beam, dance, hop and finally descend by the sloth, diver or crucifix!. Walkers are fitted with a full body harness and belayed at all times.

Cork Guns

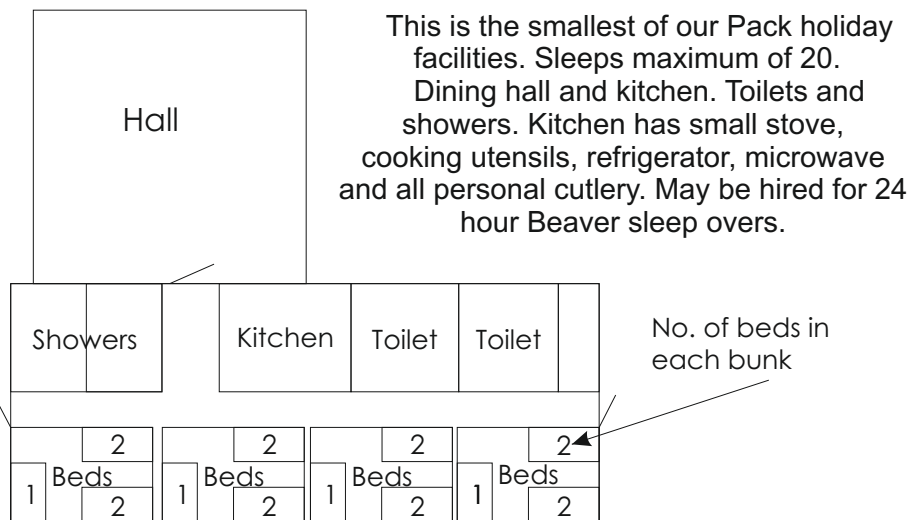
An indoor range is provided for these safe, fun weapons that fire corks at card targets. Fun for all ages.

Crossbows

The bows fire rubber sucker darts at plastic targets. Suitable for younger members. Targets can be erected on your own site.

Barcwood

Layout



This is the smallest of our Pack holiday facilities. Sleeps maximum of 20. Dining hall and kitchen. Toilets and showers. Kitchen has small stove, cooking utensils, refrigerator, microwave and all personal cutlery. May be hired for 24 hour Beaver sleep overs.

Water activities on Sapper Lake

The water is classified as 'C' class for Scouts and Safe Inland in most parts for Guides. The bottom of the lake has many sharp flintstones and we recommend the wearing of protective footwear. Scout Groups taking parties swimming must have followed all rules in POR, throw line and rescue equipment is available. People using Sapper Lake for any water activity should be aware of the dangers of Weills disease. Cuts must be covered and a shower taken after entering the water. Please report the sighting of any rats.

Water Roller



One Giant inflatable, 2 metre diameter, clear plastic tube, allows you to walk on water (if you can keep your balance?) Tethered to the bank so you cannot get lost or drift away. 2 people at a time to double the fun!

Rafting

Rafting equipment is hired for AM, PM or Eve. sessions. Rafts are designed to carry a maximum of four people. Includes paddles and buoyancy aids to suit. Lost lashings charge :- £1.00 each.

Kayaking

Single seat kayaks and three seater Canadian Canoes(C2) are available to hire. There is now a charge of £12 per hour when using your own craft, for which times must be pre booked.

Water Splash

During the six week summer holidays we hold a water activity event on Sapper Lake every Wednesday, 2:00pm to 4:30pm. Activities include; the black hole water slide, surfing 'Thriftwood' style, canoe seal launch, aerial water zip line, water canon, plus inflatables. Cost £5:50 per person. See web site for video.



Fishing on Pickles Pond

Pickle's Pond, at the North end of the Site is well stocked with most varieties of coarse fish. Common Carp to 18 lbs. Equipped poles may be hired (Bait not included). Those aged 12 years and over require an NRA rod licence. Keep nets and barbed hooks are prohibited. No night fishing.

On Site Activities

Volley Ball

Net, guylines and pegs, plus ball, may be hired for morning or afternoon and erected on your own site.

Orienteering

There are 3 courses laid out to suit all levels of competence. Maps and compasses are available from the office.

Pioneering

A large stock of equipment is available, AM or PM sessions, Lost or damaged lashings will be charged at £5.00 each.

Pond dipping

A great way to explore the depths of those murky ponds that make Thriftwood such a wonderful place to see nature at it's best. Nets, viewers, catcher jars, and tubs are all part of the kits supplied, along with explanatory notes and pictures to help those in charge.

Adventure Playground

Our adventure playground can be hired by the hour, so that you can have exclusive use of all the apparatus. The 'Zip Line' may also be available if you obtain the key from the Site Office. Preference is given to those who have paid.

Annual Events

National Pedal Car Olympics

This event takes place over the second weekend in January each year. For 2014, the dates are 10th - 12th January. Open to Scout, Guides, Explorers, and Rangers. Teams of four compete in up to eight disciplines; individual track, team relay, sprint, tractor pull, driving skills, endurance, pursuit, and blindfold pairs course. Prizes of £150, £100 and £50 for top 3 teams. Separate female team award. Evening entertainment, all other on-site activities free. Costs from £125.00. per team, with canteen facilities available at extra cost.

TLC (Thriftwood Leaders only Camp)

This event is a chance for adults to chill out and be pampered. Hot tubs, massages, bar, all on site activities, and evening entertainment for Adult Leaders, helpers, group members.

Activity Authorisation Courses

We provide a number of Leader Training course's for activity authorisation. Climbing & abseiling, rifle shooting, archery, canoeing, first aid (First Response). For details see our web site www.thriftwood.org.uk or ring Colin for more information.